



PLAIN PLUG GAUGES



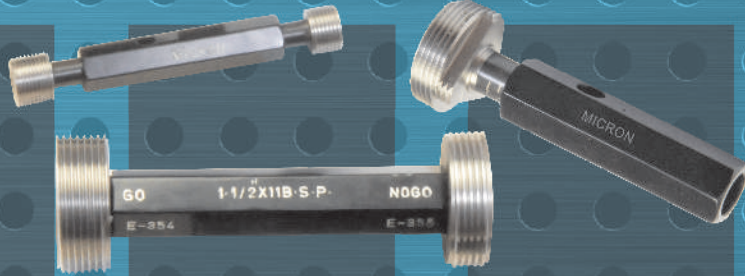
MASTER SETTING RING GAUGES



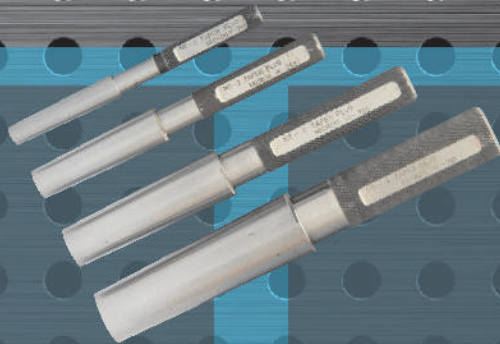
THREAD RING GAUGES



MEASURING PINS & PIN SETS



THREAD PLUG GAUGES



MORSE TAPER PLUG / TAPER RING GAUGES



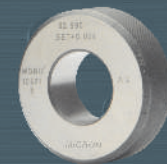
AIR RING GAUGES



OD SETTING MASTERS



FLUSH PIN GAUGES



AIR PLUG GAUGES

# MICRON CONTROL GAUGES & INSTRUMENTS

Thread Gauges, Pneumatic Gauges, Plain Plug Gauges, Snap Gauges,  
Measuring Pins (Loose & Set), Setting Master, Precision Taper Mandrills  
& Other Special Gauges in CARBIDE & STEEL material as per requirement since last 16 years.



## THREAD PLUG GAUGES



### Standard

IS , ISO, ANSI, DIN

### Special thread gauges

Forms like Buttress, Trapizoidal, ACME, Pg, BA, BSCY ,BS Cond.In single as well multi start can be manufactured.

### Range of taper thread

NPT, NPTF, BSPT, NGT, DIN158 etc

### Taper threads plug

Any kind of taper up to 1:8

### Manufacturing range

1.3 to 360 mm

### Application

To check small & big bores

### Gauging practice

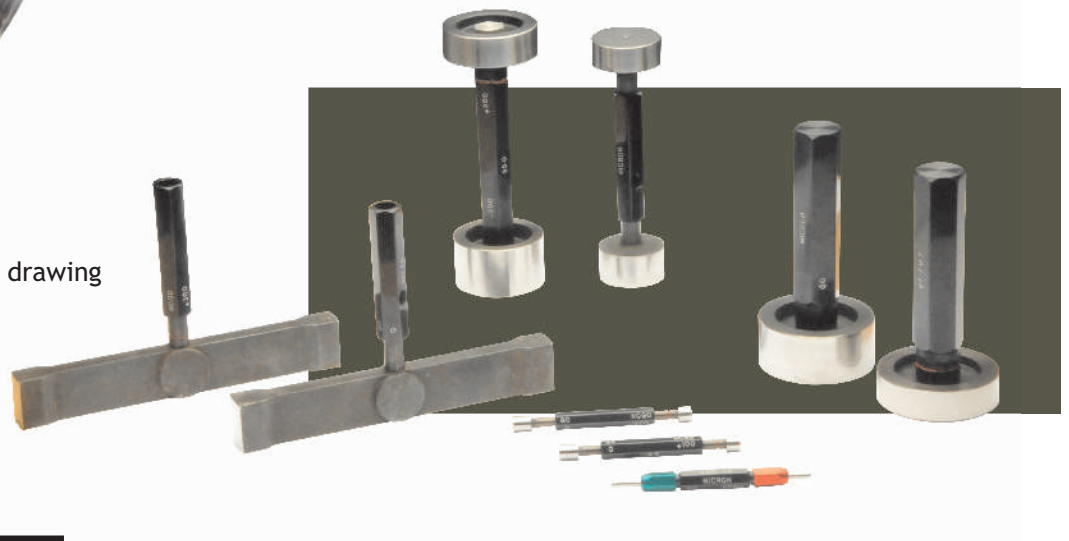
As per IS 3455-1971

Plug gauges are supplied as per drawing

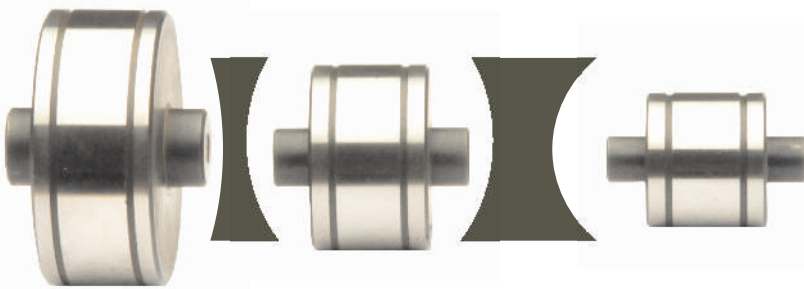
### Manufacturing range

0.50 to 300mm

## PLAIN PLUG GAUGES



## OD SETTING MASTERS



### Application

For setting external diameter measuring instrument

This eliminates cost of sleep gauge

To set floating carriage diameter measuring

machine while checking thread gauge

Blank design as per IS 4349-1987

### Manufacturing range

2.5 to 350mm

### Application

To check external diameter/

Groove diameter, To check length of component

Gauging Practice as per IS -3455-1971

Blank design as per IS 4583-1968

Special snap gauges as per drawing

### Manufacturing range

2.5 to 400mm

## FIXED SNAP GAUGES

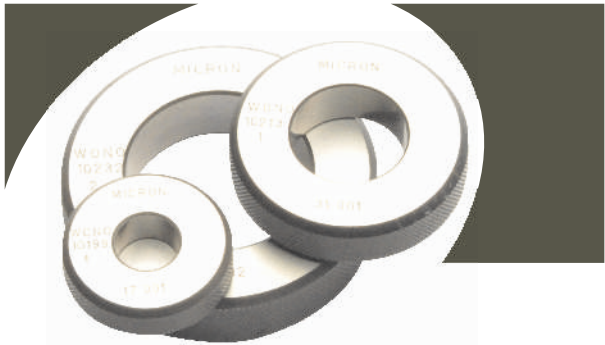




**Thread Ring Gauges**

**Standard** IS ,ISO,ANSI,DIN  
**Special thread gauges**  
 Forms like Buttress , Trapizoidal, ACME, Pg, BA, BSCY ,BS Cond.  
 In single as well multi start can be manufactured  
 Range of taper thread like NPT, NPTF, BSPT, NGT, DIN158 etc  
**Taper thread ring** Any kind of taper up to 1:8  
**Manufacturing range** 2mm to 300 mm

**MASTER SETTING RING GAUGES**



**Application** For setting internal diameter measuring instrument  
 For use as Go /Nogo Ring Gauge  
 Gauging Practice as per IS 3455-1971 / DIN2250C  
 Blank design as per IS 3485-1983/DIN 2250C  
**Manufacturing range** 2 to 400mm

**MORSE TAPER PLUG / TAPER RING GAUGES**

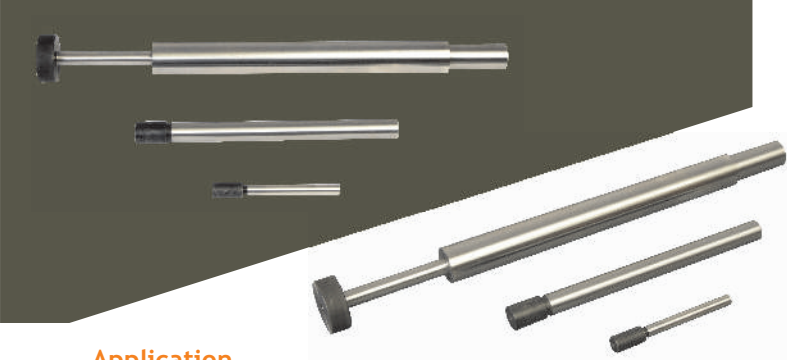
**Application** To check standard & non standard taper of bores & shafts  
**Manufacturing Reference** IS 2251-1986  
**Manufacturing range** Mt1 to MT6 & as per drawing



**MEASURING PINS & PIN SETS**

**Application**  
 To check small bores precisely.  
 To check center distance between two holes  
 Measuring pin sets supplied with knob & without knob as per requirement.  
 Loose pins of standard size or of any odd size are also available as per requirement.  
**Manufacturing range**  
 0.50 to 20 mm in step of 0.001,0.005, 0.010 & 0.020mm

**TAPER MANDRILLS**



**Application**  
 To check runout with respect to ID  
 For Machining external diameter

**FLUSH PIN GAUGES**



**Application**  
 To check required depth/distance from required surface.  
 Manufactured as per drawing or designed as per component drawing

## MICRON CONTROL GAUGES & INSTRUMENTS

We are a leading manufacturer of Gauges for the Industry with experience of over 20 years. Our gauges include Thread Gauges, Pneumatic Gauges, Plain Plug Gauges, Snap Gauges, Measuring Pins (Loose & Set), Setting Master, Precision Taper Mandrills & Other Special Gauges in CARBIDE & STEEL material as per the clients requirement since last 16 years.

## INFRASTRUCTURE

We have our own manufacturing set up in pune (Hadapsar) with all types/ required machinery and Technicians/ Labour force. Presently, we are supplying our finished goods to various clients (in auto sector) & traders all over India.

## MACHINERY USED

- UNIVERSAL CYLINDRICAL GRINDERS
- SURFACE GRINDING MACHINES
- THREAD GRINDING MACHINES (MATRIX & LINDNER)
- CENTERLESS LAPPING MACHINES
- PENTAGRAPH MACHINES FOR ENGRAVING
- LATHE MACHINES
- HACKSAW MACHINES
- DRILL MACHINES

## INSPECTION EQUIPMENTS

- FLOATING CARRIAGES, LENGTH MEASURING M/C CAPACITY 3 to 350 mm,
- SLIP GAUGE BOX ,HEIGHT GAUGE,
- MILEMASS DIALS (L.C.O.0005mm)
- TRIMOS, MICROMETERS, VERNIERS
- AC ROOM FOR FINAL INSPECTION
- ENVIRONMENTAL CONDITION 20°C
- TRACEABILITY : REF. STANDARDS USED ARE CALIBRATED AT NABL LAB.
- SUBZERO TREATMENT UNIT FOR DIMENSIONAL STABILITY

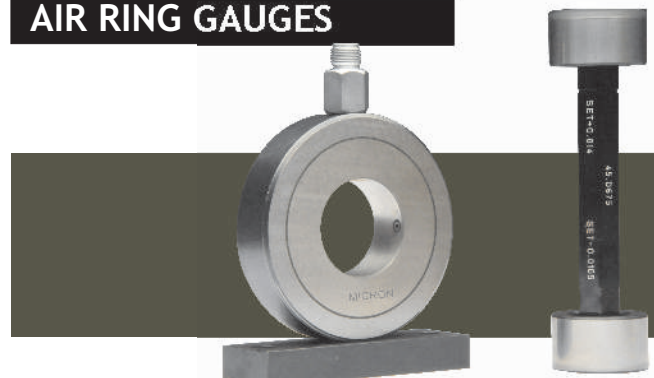


### AIR PLUG GAUGES



Can be manufactured suitable to your air gauge unit  
Air plugs are hard-chrome plated through hardened  
with hardness 900 to 1100 VPN  
Manufacturing range:- 4 to 200mm

### AIR RING GAUGES



Can be manufactured suitable to your air gauge unit  
Air ring are supplied in HCHC with hardness 60+/-2 HRC  
Manufacturing range 2 JET :- 6 to 140mm  
Manufacturing range 3 JET :- 8 to 80mm



## MICRON CONTROL GAUGES & INSTRUMENTS

Works : Karne Bldg., 19/A, Near Shiv Mandir, Gondhale Nagar,  
Hadapsar, Pune – 411028.

Tel: (O) 020 65202769, (M) 09850977123

[sales@microncontrolgauges.com](mailto:sales@microncontrolgauges.com), [microncontrolgauges@yahoo.co.in](mailto:microncontrolgauges@yahoo.co.in)

[www.microncontrolgauges.com](http://www.microncontrolgauges.com)